

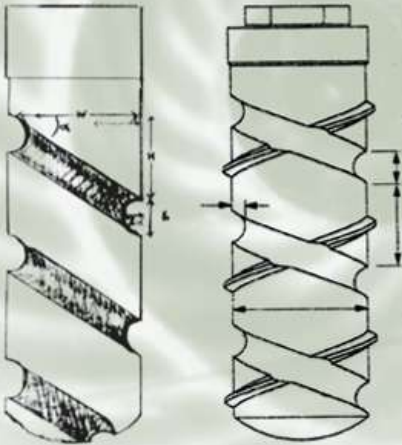
THE NATURAL WAY TO CREATE AN IMPLANT



 SWISS IMPLANTS, INC.

## INTRODUCING THE CURVES OF LIFE

*The first implant system presenting simplicity, versatility and sophistication to the surgeon and the restorative dentist.*



The Swiss Implant Rootform® system for dental implants was developed by a dentist with over twenty-five years of experience in implant dentistry. The system was born from the needs of general dentistry to treat different restorative situations with beneficial outcomes. The recognizable needs are patient, staff, and doctor satisfaction. General dentistry is primarily concerned with restoration. In the case of missing teeth, traditional dentistry has offered replacement by asking adjacent teeth to share the load and consequent stress. As a mature science, implant dentistry now offers a true reconstructive alternative without additional burden being placed upon adjoining teeth.

The Swiss RootForm® system offers leading edge manufacturing, packaging, delivery methods and aids. This system has superior solutions for hard and soft tissues from a design standpoint. Minimum tooling and instrumentation is required. This compact system elegantly performs everything a general dentist needs to become an active participant with their chosen surgical partner.

The implant bodies include two designs for different surgical situations. The Spiraltite® thread is curved and spiraled down the body, much the way bone actually grows, eliminating stress areas caused by traditional sharp thread. The BoneLock® implant utilizes the curved left handed thread, but adds a small right handed thread outside the body. This self tapping device offers immediate engagement without a complicated tapping procedure, yet is small enough that destructive stress risers are avoided.

These curves closely emulate the proportional spirals ubiquitous in nature. Each shape reveals its mathematical beauty in the measurements described in the Golden Triangle of Pythagorus with each segment related by the smaller to the larger and the larger to the whole in the ratio of 1.618.

# NATURALLY SUPERIOR ROOTFORM<sup>®</sup> IMPLANT

**All implants are HA coated and supported by the historically proven agreement that a bone bond is formed more quickly and completely. The Bonelock implant also offers an alternative TPS coating.**

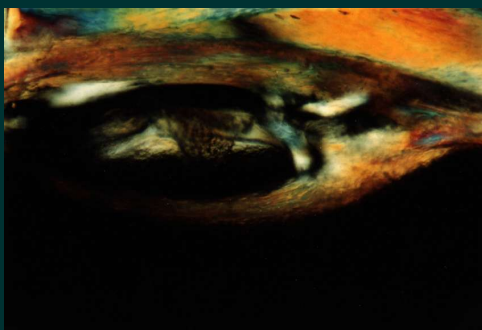
## SPIRALTITE<sup>®</sup> IMPLANTS PATENTED

Where locking threads are not needed or desired, the Spiraltite<sup>®</sup> design maximizes usable surface area and allows increased seating tightness by releasing hydraulic pressure through the helical grooves allowing bone growth in a natural helical form.



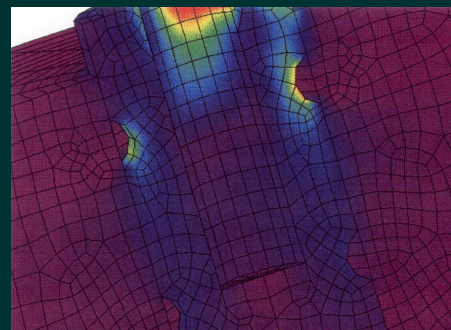
## BONELOCK<sup>®</sup> IMPLANTS PATENTED

The Bonelock<sup>®</sup> implant is the first hybrid implant, combining the ease and usable surface area of the left hand spiral groove with the self-tapping external right hand thread. Displaced bone is moved directly into into this counter groove.



BONE APPOSITION IN GROOVES

This electron microscopic photograph of bone apposition in a curved surface of an implant demonstrates maximum affinity for this shape.



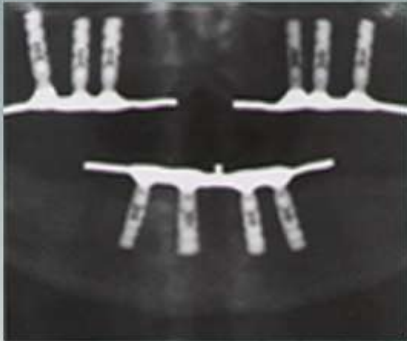
FE LOAD PLOT

This computer model of the Bonelock implant under compression loads illustrates the non-stressing affect of the external thread and demonstrates that force concentration is focused where it can offer maximum deformation resistance.



# ROOTFORM<sup>®</sup> PROSTHETIC SYSTEM

## ROOTFORM<sup>®</sup> FLAT TOP ABUTMENTS



OVER-DENTURE  
BAR CONNECTOR  
ON TISSUE ABUTMENTS

Designed primarily for bar connector over-dentures, the Flat Top implants accommodate implants connected together. There is a polished periodontal collar of two millimeters to allow for supra alveolar placement. The hour glass abutments allow the periodontal ligament to fit more tightly and comfortably, effectively reducing foreign body invasion.



Preamble Abutment  
3.3 and 3.8 diameter



Bar Tissue Abutment 3.3 and 3.8  
diameter 3mm and 4mm height



SINGLE TOOTH  
REPLACEMENTS

## ROOTFORM<sup>®</sup> HEX TOP ABUTMENTS

*For cemented crown and bridge restoration*

The Hex Top implants offer anti-rotation comparable with the industry leader. These are suitable for single or multiple restorations. The abutments have tissue collars that are anatomically shaped for anterior and posterior tissue contours. There are twelve points of rotation on the angled abutments for more alternative positioning. For the need to fabricate custom abutments and connector, pattern pieces are available for all implants.



Straight Abutment  
3.3 and 4.0 diameter  
12mm height



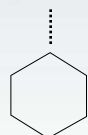
25° Angled Abutment  
3.3 and 4.0 diameter  
12mm height



15° Angled Abutment  
3.3 and 4.0 diameter  
12mm height



15° Anterior Abutment  
3.3 and 4.0 diameter  
10mm height



Standard six point  
base connector



Twelve point base connector  
allows for 6 extra positions  
to fit additional situations



Abutments include  
Fixation Screw

## NATURALLY VERSATILE PRODUCT SELECTION



### SPIRALTITE<sup>®</sup> IN FLAT TOP & HEX TOP IMPLANTS

The Spiraltite Flat Top and Hex Top implants and the Bonelock Flat Top implants are delivered by the packaging stopper adapted to the cover screw. Package color coding is consistent throughout for implant diameter and connector types. Red and gray denote flat tops, while blue and green designate the hex tops.



### BONELOCK<sup>®</sup> IN FLAT TOP & HEX TOP IMPLANTS




The Bonelock Hex Top implants are packaged with an immediate transfer assembly. This assembly acts as the insertion tool and can be connected to a hand wrench or latch socket driver. These are color coordinated for diameter, green for 3.3 mm and blue for 4.0 mm. The cover screw is housed beneath the stopper label.

# 3.3 MM FLAT TOP IMPLANTS & ABUTMENTS

**SPIRALTITE®**

HA Coated


PART#	SIZE
1310H	3.3 x 10
1312H	3.3 x 12
1314H	3.3 x 14
1316H	3.3 x 16



**BONELOCK®**

HA Coated

PART#	SIZE
3310H	3.3 x 10
3312H	3.3 x 12
3314H	3.3 x 14
3316H	3.3 x 16



## Healing Abutments



Part # 1323  
3.3 x 3 mm



1325  
3.3 x 5 mm



1327  
3.3 x 7 mm

## Flat Top Transfer Pin 4/pkg



7230  
3.3 & 3.8 mm

## Flat Top Implant Analog 4/pkg



6580  
3.3 & 3.8 mm

## Direct Preparable Abutment



Part # 1330  
3.3 mm

## Bar Abutment



1343  
3.3 x 3 mm

## Bar Abutment



1344  
3.3 x 4 mm

## Custom Tissue Abutment Pattern 4/pkg



6130  
3.3 mm

## Bar Abutment Pattern Piece 4/pkg



6000  
3.3 & 3.8 mm

## Flat Top Abutment Screw 4/pkg



Part # 6300  
3.3 & 3.8 mm

## Bar Attachment Screw 4/pkg



6800  
3.3 & 3.8 mm

## Bar Abutment Cap 4/pkg




1850  
3.3 & 3.8 mm

\* Quantity Pricing is Available


# 3.8 MM FLAT TOP IMPLANTS & ABUTMENTS

**SPIRALTITE®**






HA Coated	
PART#	SIZE
1810H	3.8 x 10
1812H	3.8 x 12
1814H	3.8 x 14
1816H	3.8 x 16

**BONELOCK®**



HA Coated	
PART#	SIZE
3810H	3.8 x 10
3812H	3.8 x 12
3814H	3.8 x 14
3816H	3.8 x 16

**Healing Abutments**

Part # 1823  
3.8 x 3 mm

1825  
3.8 x 5 mm

1827  
3.8 x 7 mm

**Flat Top Transfer Pin**  
4/pkg



7230  
3.3 & 3.8 mm

**Flat Top Implant Analog**  
4/pkg



6580  
3.3 & 3.8 mm

**Direct Preparable Abutment**



Part # 1830  
3.8 mm

**Bar Abutment**



1843  
3.8 x 3 mm

**Bar Abutment**



1844  
3.8 x 4 mm

**Custom Tissue Abutment Pattern**  
4/pkg



6180  
3.8 mm

**Bar Abutment Pattern Piece**  
4/pkg



6000  
3.3 & 3.8 mm

**Flat Top Abutment Screw**  
4/pkg




Part # 6300  
3.3 & 3.8 mm

**Bar Attachment Screw**  
4/pkg



6800  
3.3 & 3.8 mm

**Bar Abutment Cap**  
4/pkg



1850  
3.3 & 3.8 mm

\* Quantity Pricing is Available



# 3.3 MM HEX TOP IMPLANTS & ABUTMENTS

## SPIRALTITE®



HA Coated	
PART#	SIZE
2310H	3.3 x 10
2312H	3.3 x 12
2314H	3.3 x 14
2316H	3.3 x 16
2318H	3.3 x 18

## BONELOCK®



HA Coated	
PART#	SIZE
4310H	3.3 x 10
4312H	3.3 x 12
4314H	3.3 x 14
4316H	3.3 x 16
4318H	3.3 x 18

## BONELOCK®



TPS Coated	
PART#	SIZE
4310T	3.3 x 10
4312T	3.3 x 12
4314T	3.3 x 14
4316T	3.3 x 16
4318T	3.3 x 18

### Healing Abutments



Part # 2330  
3.3 x 3 mm



2350  
3.3 x 5 mm



2370  
3.3 x 7 mm

### Transfer Assembly 4/pkg



7300  
3.3 mm

### Hex Implant Analog 4/pkg



6530  
3.3 mm

### Straight Abutment

w/Fixation Screw



Part # 2300  
3.3 mm

### Angled Abutment

w/Fixation Screw



2315  
3.3 mm 15 Degree

### Anterior Angled Abutment

w/Fixation Screw



2317  
3.3 mm 15 Degree

### Angled Abutment

w/Fixation Screw



2325  
3.3 mm 25 Degree

### Hex Custom Abutment Pattern 4/pkg



Part # 6230  
3.3 mm

### Fixation Screw 4/pkg



2333  
3.3 mm

\* Quantity Pricing is Available



# 4.0 MM HEX TOP IMPLANTS & ABUTMENTS

## SPIRALTITE®



HA Coated	
PART#	SIZE
2410H	4.0 x 10
2412H	4.0 x 12
2414H	4.0 x 14
2416H	4.0 x 16
2418H	4.0 x 18

## BONELOCK®



HA Coated	
PART#	SIZE
4410H	4.0 x 10
4412H	4.0 x 12
4414H	4.0 x 14
4416H	4.0 x 16
4418H	4.0 x 18

## BONELOCK®



TPS Coated	
PART#	SIZE
4410T	4.0 x 10
4412T	4.0 x 12
4414T	4.0 x 14
4416T	4.0 x 16
4418T	4.0 x 18

### Healing Abutments



Part # 2430  
4.0 x 3 mm



2450  
4.0 x 5 mm



2470  
4.0 x 7 mm

### Transfer Assembly 4/pkg



7400  
4.0 mm

### Hex Implant Analog 4/pkg



6540  
4.0 mm

### Straight Abutment

w/Fixation Screw



Part # 2400  
4.0 mm

### Angled Abutment

w/Fixation Screw



2415  
4.0 mm 15 Degree

### Anterior Angled Abutment

w/Fixation Screw



2417  
4.0 mm 15 Degree

### Angled Abutment

w/Fixation Screw



2425  
4.0 mm 25 Degree

### Hex Custom Abutment Pattern 4/pkg



Part # 6240  
4.0 mm

### Fixation Screw 4/pkg

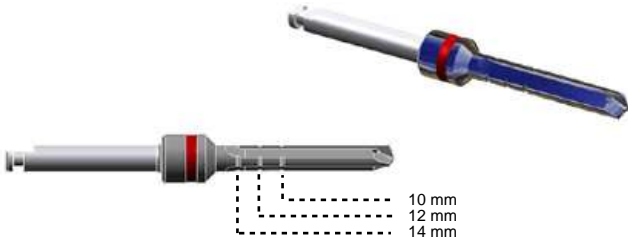


2444  
4.0 mm

\* Quantity Pricing is Available

# SURGICAL INSTRUMENTS

- Tri-Spade design increases cutting efficiency by 33%.
- “True” osteotomy due to single piece construction.
- Electro-polishing lowers the coefficient of friction reducing heat generation.
- Color coded diameter increments.



PART DESCRIPTION	PART NUMBER	RETAIL COST
<b>TRI-SPADE DRILLS</b>		
Locator Drill (Site Prep)	7181	C a l l  f o r  P r i c e s
Preliminary in Graduated Sizes -Yellow	7110	
Preliminary in Graduated Sizes -Red	7120	
Preliminary in Graduated Sizes -Light Blue	7130	
Final Drill - 3.3 mm Spiraltite -Green	7140	
Final Drill - 3.3 mm Bonelock -Black	7150	
Final Drill - 3.8 Bonelock or 4.0 Spiraltite -Orange	7160	
Final Drill - 4.0 mm Bonelock -Dark Blue	7170	

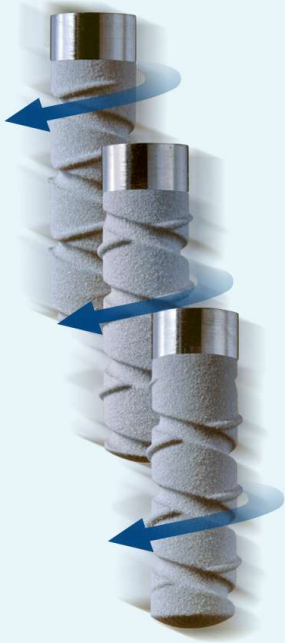


PART DESCRIPTION	PART NUMBER	RETAIL COST
<b>SURGICAL KIT</b>		
Seating Driver (Latch)	7000	C a l l  f o r  P r i c e s
Hex Core Driver	7010	
Drill Extender	7020	
Trial Pin	7500	
3.3 mm Depth Pin	7530	
3.8 mm Depth Pin	7580	
Hand Socket Wrench	7600	
1.3 mm Hex Driver Short	7613	
Socket Driver	7700	
Surgical Placement Tapper	7710	
Organizer Box	8000	



# THE SWISS ROOTFORM<sup>®</sup> ADVANTAGES

## TECHNICALLY ADVANCED



SHOWING ROTATION OF  
BONELOCK<sup>®</sup> IMPLANTS

- Biocompatible design - patented double helix utilizes the Golden Proportion ratio of 1.618 to load supporting bone. This law of nature is mimicked in the pitch length and curved surface shape of the Spiraltite and Bonelock implant bodies.
- Self tapping placement - no bone taps or countersinks needed
- Hydraulic pressure release with patented Bonelock double helix
- Outstanding surface area without destructive stress risers
- Immediate loading capabilities of outer long pitched locking thread, pulls implant body into secure position
- Solves more problems with fewer parts because of versatile abutments
- Long pitched implant thread provides a stable base allowing short pitched thread attachment immediately, with movement
- Surface contours conducive to GBR repair
- HA and TPS coating choices always on blasted surfaces

## COST APPROPRIATE

- Superior quality with significant cost savings
- Minimal inventory requirements - fewer parts
- Rapid placement - self tapping feature reduces chairside time increasing productivity
- Total restoration time reduced
- Delivery system, both surgical and prosthetic, compatible with leading systems
- Reduced initial investment requirements

## EASY TO USE

- Prosthetic parts designed for traditional crown and bridge restorations.
- Connectors for fixed and removable prosthetics are compatible with the leading manufacturer's threads, wrenches and drivers
- Delivery instrumentation, both surgical and prosthetic, compatible with leading system
- Compact and simple delivery kits due to technical advances in design
- Versatile and complete - hex and flat top, single and double helix body design, HA and TPS coatings, fixed and removable prosthetic components

# CREATING THE NATURAL SUPERIOR PRODUCT

*We don't make everything you'll ever need -  
just what you'll really need every day!*

## PRODUCT SUPPORT

- Education
- Training
- Laboratory

## • MANUFACTURING

Swiss implants products are machined from Titanium Alloy (Ti-6AL-4V) in a state of the art facility using the newest medical/dental technology.

## • COATING

Our implants are all coated with Hydroxylapatite or Titanium Plasma Spray. Each have become standards of the orthopedic and dental implant industries. The device to bone integrating advantages they provide are well defined within the latest dental and medical literature.

## • SIMPLICITY AND VERSATILITY

The Swiss Implant System is designed with a minimum number of parts; the primary components needed to provide outstanding longterm restorations. Vast arrays of surgical and prosthetic instrumentation are no longer needed with the Swiss system.

## • QUALITY

Consistency and repeatability are paramount in producing close tolerance medical products for the 21st century. Computer controlled manufacturing stations operated by highly skilled technicians produce products that surpass the standards established for the dental implant profession.

## • CLEANING AND STERILIZATION

Cleaning and quality control inspections occur at repeated steps along the manufacturing process. Each implant package is sterilized using the gamma radiation process, a form of pure energy that is generally characterized by its deep penetration and low dose rates, effectively eliminating any microorganisms by attacking the DNA molecule with minimal temperature effect. Gamma radiation is a penetrating sterilant. No area of the product, its components, or packaging is left with uncertain sterility after treatment.



 **SWISS IMPLANTS, INC.**

(800) 549-5000

4420 South Broad Street - Building F  
San Luis Obispo, CA 93401